

# Replacement Parts List

## Economite Model DS24



- First construction June 1, 1984 (date code 2284).
- Features a 3-function redundant main automatic valve as required by ANSI Z21.17b.
- A 20VA Transformer required to satisfy redundant valve load.
- Supersedes Model DS22.
- Early burners featured a Fenwal 05-16 Control Board for ignition and flame monitoring. In February 1986, Honeywell S87D became an alternate Electronic Control System. Refer to Page 3 - DSI ELECTRONIC CONTROLS.
- Production discontinued February 23, 1993 (date code 0893).
- Superseded by Model DS24A featuring a 30VA Transformer to accommodate higher current draw for newer Honeywell Combination Valves, Terminal strip with 4-terminals plus earth ground terminal and modified wiring.



**Midco**<sup>®</sup>  
INTERNATIONAL

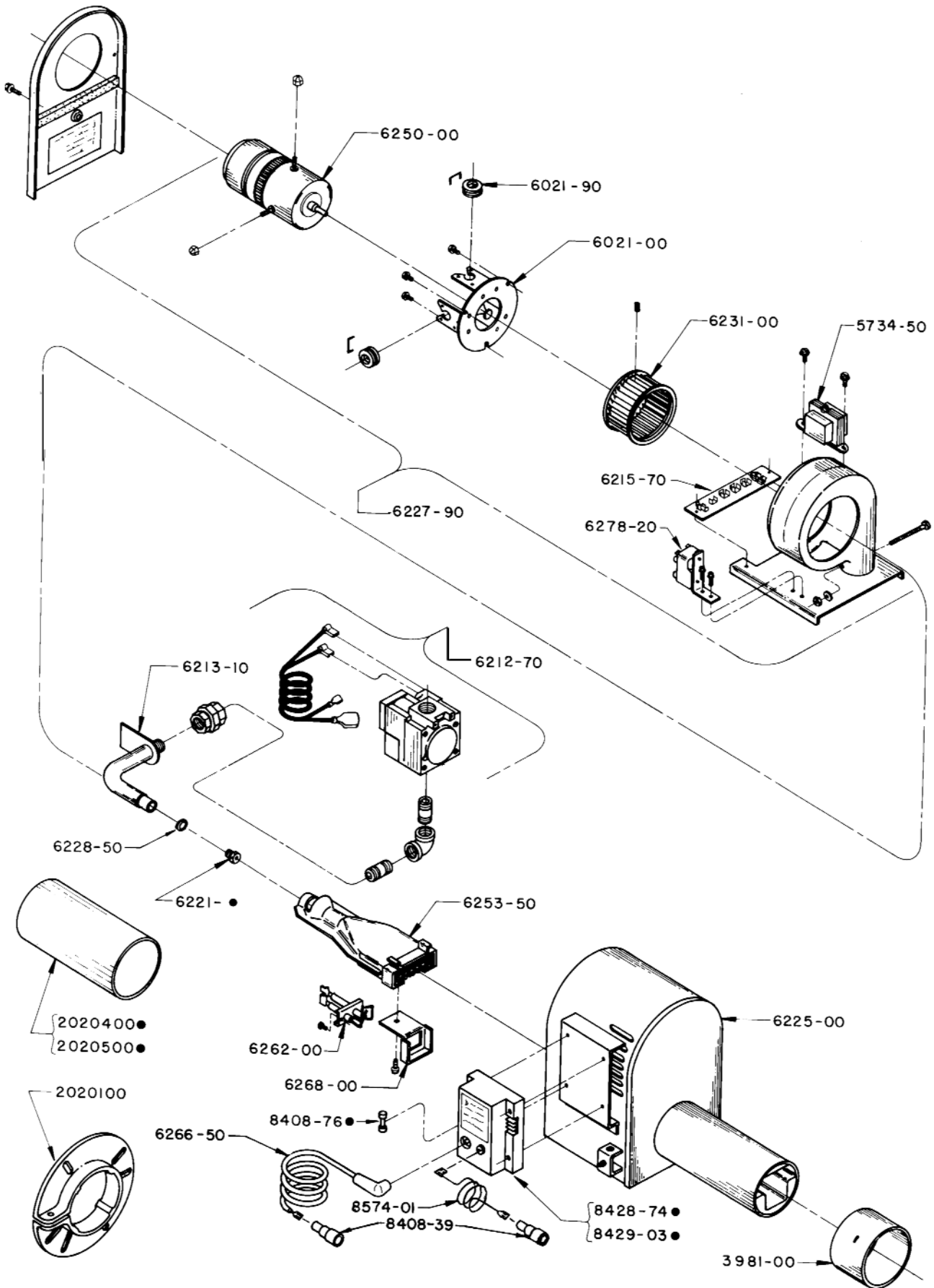
**Midco<sup>®</sup> International Inc.**

4140 West Victoria Street  
Chicago, Illinois 60646  
tel 773.604.8700  
fax 773.604.4070  
web [www.midcointernational.com](http://www.midcointernational.com)  
e-mail [sales@midcointernational.com](mailto:sales@midcointernational.com)

IMPORTANT: Availability of parts as well as specifications are subject to change without notice. Please consult factory for item availability.

**AVOID ERROR IN PARTS SELECTION.** When ordering use complete MIDCO Part Number and Description. Furnish burner model number, bill of material number, serial number or date code (if available) from rating plate.

# Economite DS24 Exploded View



● Refer to listing for proper application

# Economite DS24 Parts List

<i>Part #</i>	<i>Description</i>	<i>Part #</i>	<i>Description</i>
3981-00	4" Dia. Stainless Nozzle Sleeve	6225-00	Plenum and Tube Assembly
5742-50 <sup>3</sup>	Transformer 115/1/50-60 Primary, 24V-20VA Secondary (Basler BE18120-GDD, BE121620-GDD, BE121620-GAA; Prod. Unlimited 4000-01C02J232, 4000-01C02K232) - Formerly MIDCO Part No. 8447-21	6228-50	Spud Gasket
5734-50	Transformer 115/1/50-60 Primary, 24V-30VA Secondary (Prod. Unlimited 4000-01M07J232, 4000-01M07K232; Basler BE121630GDD, BE121630GAA)	6231-00	Blower Wheel
6021-00	Motor Mounting Bracket	6250-00 <sup>1</sup>	Motor with built in centrifugal switch - 120 volt (Universal Electric JA1M069NV#; Fasco 7121-6655)
6021-90	3 Rubber Motor Mounts and Clips	6253-50	Burner Nozzle with Ribbon
6212-70	Combination Valve Replacement Kit	6262-00	Electrode Assembly (order Mounting Bracket separately)
6213-10	Orifice Pipe Elbow and Seal Assembly	6266-00*	Input Cable and Plug Harness for Fenwal Control
6215-70	Terminal Strip Only	6266-50	High voltage Cable (Fenwal or Honeywell Control) - Order Silicone Boot separately
6221-08	Main Spud - 1/8 Drill (.125) - 50,000 to 70,000 BTU/hr. - PROPANE	6268-00	Electrode Mounting Bracket
6221-09	Main Spud - #24 Drill (.152) - 50,000 to 70,000 BTU/hr. - NATURAL; 70,000 to 100,000 BTU/hr. - PROPANE	6278-20	Motor Switching Relay - 24 volt (RBM 84-50102-107; Prod. Unlimited 9400-01Q2232) - Formerly MIDCO Part No. 8406-04
6221-10	Main Spud - #15 Drill (.180) - 70,000 to 100,000 BTU/hr. - NATURAL; 100,000 to 150,000 BTU/hr. - PROPANE	8408-39	Silicone Boot - may be used on Spark Rod or Flame Sensor
6221-11	Main Spud - 7/32 Drill (.218) - 100,000 to 150,000 BTU/hr. - NATURAL; 150,000 to 225,000 BTU/hr. - PROPANE	8408-76	3-Amp Type 3AG Glass Fuse 1/4" Dia. x 11/4" LG (M-H Control only)
6221-12	Main Spud - "I" Drill (.272) - 150,000 to 225,000 BTU/hr. - NATURAL	8428-74 <sup>2</sup>	Control Board with Enclosure (Fenwal 05-162426-201, 05-296426-251)
6227-90	Blower Shelf Assembly (includes Motor, Blower Wheel and Housing, Terminal Strip, Motor Relay and 24 volt Transformer)	8429-03 <sup>2</sup>	Electronic Control (M-H S87D1087)
		8574-01	Sensor Wire (order Silicone Boot for Flame Sensor separately)
		2020100	4" Dia. Mounting Flange
		2020400	4" Long Accessory Blast Tube Extension
		2020500	8" Long Accessory Blast Tube Extension

\*NOT ILLUSTRATED

## NOTES

- Motors featuring permanently lubricated Ball Bearings were used for the first time in production in June, 1985 (date code 2585).
- Both Fenwal 05-16 and Honeywell S87D Electronic Controls have been used in production. Care must be taken in choosing a replacement control, as these controls ARE NOT PHYSICALLY INTERCHANGEABLE. The connecting wiring harness to each control is different and no attempt should be made to modify any harness. If the Electronic Control has to be replaced, the replacement must be identical as to the make and model number, or must be an authorized substitute. EXAMINE THE EXISTING CONTROL ON THE BURNER TO DETERMINE ITS MODEL NUMBER AND MANUFACTURER BEFORE ORDERING FROM THE LISTING ABOVE.



**WARNING: EXPLOSION HAZARD. CAN CAUSE SERIOUS INJURY OR DEATH. AN ELECTRONIC DEVICE CAN MALFUNCTION IF IT GETS WET. NEVER TRY TO USE A DEVICE THAT HAS BEEN WET - REPLACE IT.**

Listed below are Bills of Material (current at this printing) and the Controls featured in them. This list is for reference only and should be used for confirmation or if the manufacturer of control cannot be determined.

Fenwal		Honeywell	
4020400	4020426	4020410	4020438
4020405	4020434	4020415	4020439
4020424	4020435	4020416	4020440
4020425	4020436	4020437	

- To avoid confusion when ordering the proper transformer, match the specifications of the transformer because they differ physically in size.

