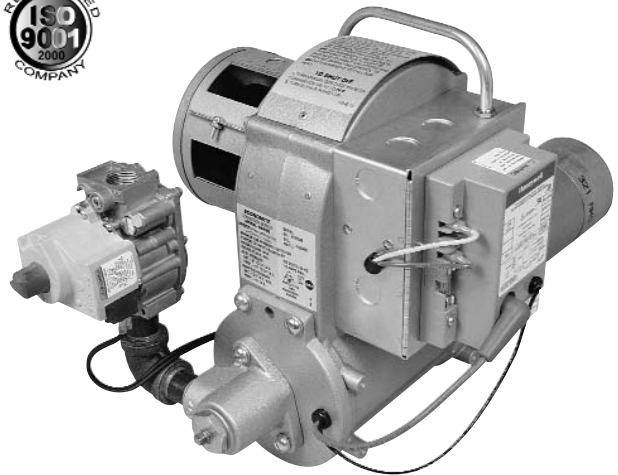


Replacement Parts List

Economi te
Model DS45B
Conversion Burners



Installation Manual 8470 72

- Current Installation and Service Manual 8470-72
- First construction started May 30, 1993 (date code 2293).
- Features a Honeywell DSI Electronic Control Board.
- Supersedes Model DS45. Model DS45B was assigned to alleviate possible confusion replacing gas valves.

IMPORTANT: Availability of parts as well as specifications are subject to change without notice.
Please consult factory for item availability.

AVOID ERROR IN PARTS SELECTION. When ordering use complete MIDCO Part Number and Description. Furnish burner model number, bill of material number, serial number or date code from rating plate.

AVOID ERROR IN PARTS SELECTION. When ordering use complete MIDCO Part Number and Description. Furnish Burner Model Number, Bill of Material Number and Date Code (if available) from spec plate.

IMPORTANT: Availability of parts as well as specifications are subject to change without notice. Please consult factory for item availability.

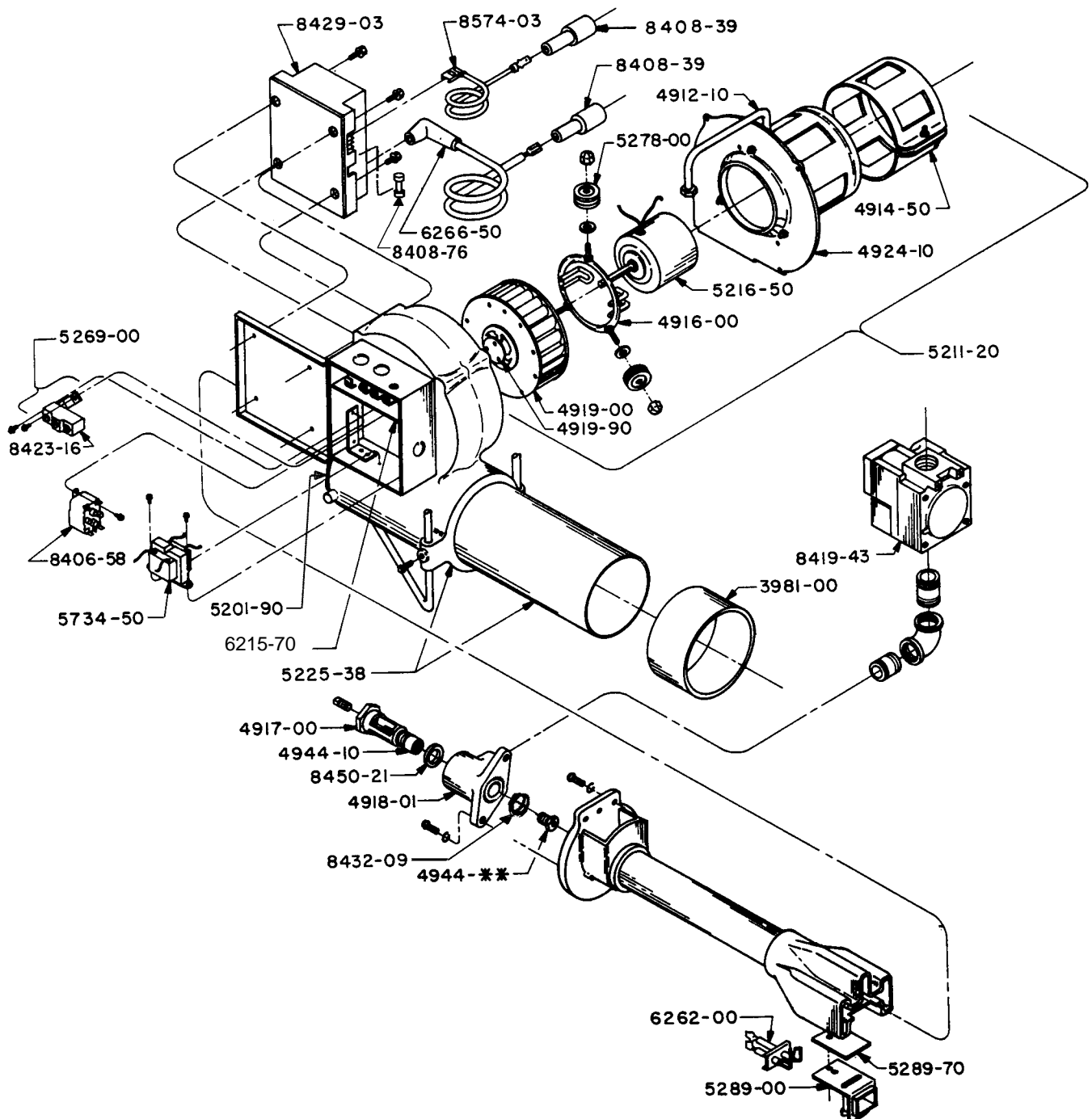


Midco[®]
INTERNATIONAL

Midco[®] International Inc.
4140 West Victoria Street
Chicago, Illinois 60646
tel 773.604.8700
fax 773.604.4070
web www.midcointernational.com
e-mail sales@midcointernational.com

Quality Designed for Proven Performance

206
8472 58
Printed in U.S.A.




Component layout may not be as shown

** Refer to listing for proper application.

Part Number	Description	Part Number	Description
3981-00	4" Dia. Stainless Nozzle Sleeve	5734-50	Transformer 115/1/50-60 Primary, 24V-30VA Secondary (Prod. Unlimited 4000-01M07J232, 4000-01M07K232; Basler BE121630GDD, BE121630GAA)
4912-10	Motor Conduit with hardware	6215-70	Terminal Strip only
4914-50	External Air Shutter	6262-00	Electrode Assembly (order Mounting Bracket and Gasket separately)
4916-00	Motor Mounting Ring less Rubber Mounts and Nuts	6266-50	Hi-Voltage Cable (order Silicone Boot for Spark Electrode separately)
4917-00	Main Orifice Holder	8406-58	Motor Switching Relay-24V (Prod Unlimited 9400-01Q2232)
4918-01	Orifice Elbow (3/4" NPT)	8408-76	3-Amp type 3AG Glass Fuse-1/4" Dia. x 1 1/4" LG
4919-00	Blower Wheel complete with Centrifugal Actuator and Disc	8408-39	Silicone Boot-may be used on Flame Sensor or Spark Electrode
4919-90	Centrifugal Actuator Disc	8419-43 ¹	3/4" 3-Function Redundant Main Valve with Regulator (M-H VR8305M4009)
4924-10	Inlet Side Plate	8423-16	Blower Interlock Switch (Micro BZ2RQ174-A2)
4944-01	Main Spud ¹¹ / ₃₂ Drill (.343) minimum capacity-NATURAL	8429-03 ¹	DSI Electronic Control (M-H S87D1087)
4944-02	Main Spud ²⁵ / ₆₄ Drill (.390) maximum capacity-NATURAL	8432-09	O-Ring Seal
4944-10	Main Spud Extension(s)	8450-21	Orifice Holder Sealing Gasket
5201-90	400-Series Rubber Seal Strip	8470-72*	Installation and Service Manual
5211-20	Motor Wheel, Side Plate and Cage Assembly-120/1/60	8574-03	Sensor Wire (order Silicone Boot for Flame Sensor separately)
5216-50	Motor less Mounting Ring and Rubber Mounts 120/1/60 (Universal Electric JB2P048N#; Fasco 7163-7511)	2032000*	DS45B PROPANE Kit
5225-38	Blower Housing and Blast Tube Assembly	2020100*	4" Dia. Mounting Flange
5269-00	Blower Interlock Switch with Bracket	2020400*	4" Long Accessory Blast Tube Extension
5278-00	3 Rubber Mounts and Nuts	2020500*	8" Long Accessory Blast Tube Extension
5289-00	Electrode Mounting Bracket		
5289-70	Electrode Mounting Bracket Gasket		
5292-00*	DS45B Valve Wire Assembly		

* Not illustrated

Notes

-  **WARNING: Explosion hazard. Can cause serious injury or death. An electronic device can malfunction if it gets wet. Never try to use a device that has been wet-replace it.**



Midco International Inc. 4140 West Victoria Street * Chicago, Illinois 60646
tel 773.604.8700 * fax 773.604.4070 * web www.midcointernational.com email sales@midcointernational.com



206
8472 58
Printed in USA