

Replacement Parts List

Economite Model RS40



Installation Manual 8471 09

- First construction: October 1998



Midco[®]
INTERNATIONAL

Midco[®] International Inc.
4140 West Victoria Street
Chicago, Illinois 60646
tel 773.604.8700
fax 773.604.4070
web www.midco-intl.com
e-mail sales@midco-intl.com

AVOID ERROR IN PARTS SELECTION. When ordering use complete MIDCO Part Number and Description. Furnish Burner Model Number, Bill of Material Number and Serial No. (if available) from rating plate.

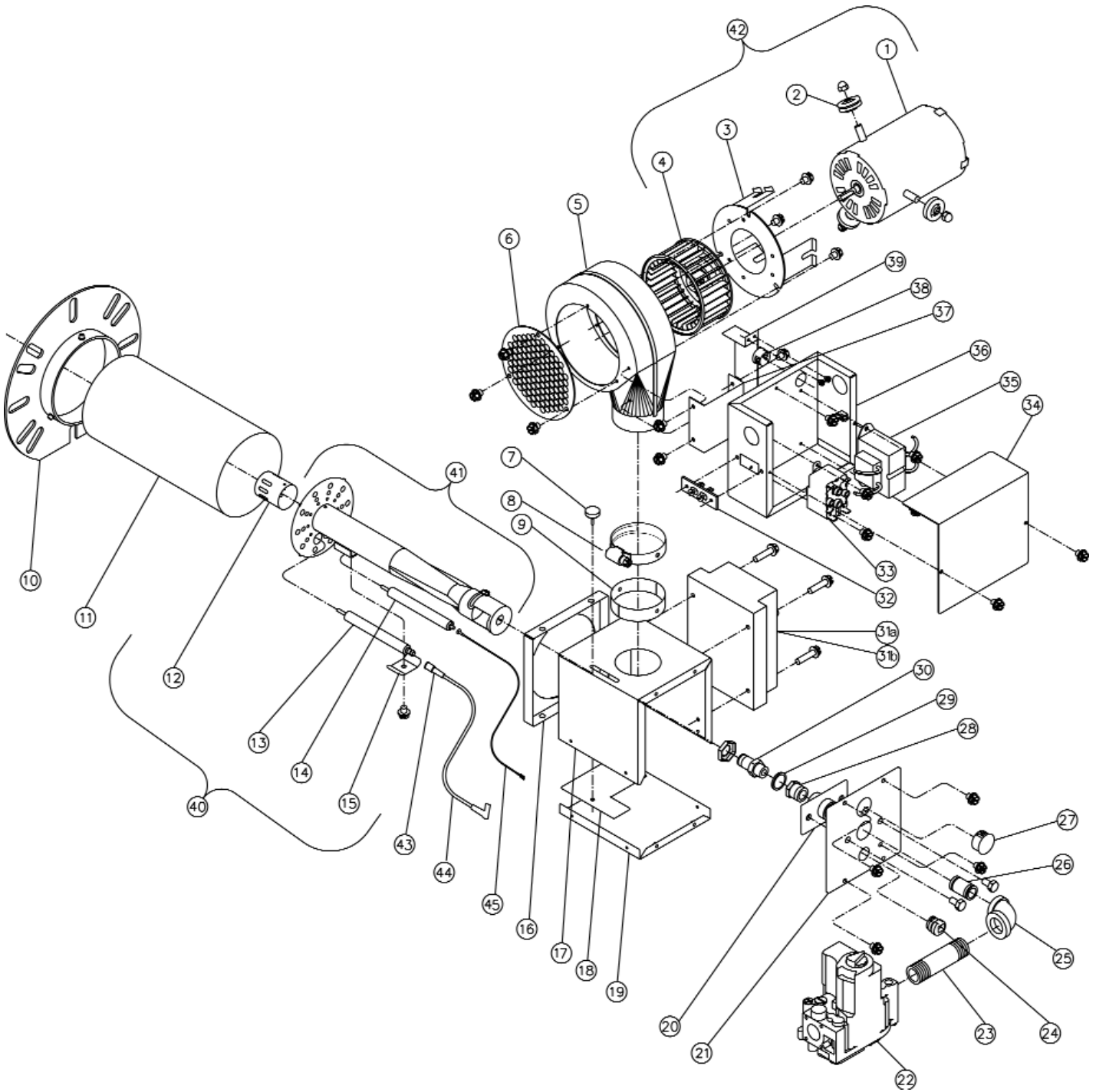
IMPORTANT: This bulletin details standard stocking **RS ECONOMITES** and some customized parts for O.E.M. burners.

IMPORTANT: Availability of parts as well as specifications are subject to change without notice. Please consult factory for item availability.

Quality Designed for Proven Performance

801
8472 74
Printed in USA

8472 74 Exploded View



8472 74 Parts List

Item #	Part #	Description	Qty.
1	6250-00	SH-P MTR / SW /TOP / B-BRNGS	1
2	6021-90	3 RUBBER MOTOR MOUNT	3
3	5310-60	RS 40 MTR MNT RVTMT	1
4	6231-00	BLO WHL	1
5	5451-00	BLO HSG WLDMT & DTL RS-SER	1
6	5305-20	RS 40 MTR INLT GUARD	1
7	5409-00	SHUT SCR	1
8	5303-20	HOSE CLAMP	1
9	5303-10	CLAMP RING	2
10	5516-80	MOUNTING FLANGE	1
11	6203-00	BLAST TUBE	1
12	5400-70	DISTRIBUTOR-RS SERIES	1
13	5450-20	SPK ELECTD ASSM RS SER	1
14	5450-10	SENSE ELECTD ASSM RS SER	1
15	5302-80	ELECTRODE BRACKET	1
16	5567-40	PLENUM FRONT PLATE	1
17	5450-50	PLNM SHELL-RS40 CNV	1
18	5301-10	RS-SER SHUTTER	1
19	5450-70	PLNM BTTM PLT-RS40	1
20	5402-70	BRACKET	1
21	5401-80	BK-PLT	1
22	8419-63	GAS VAL-SLOW OPENING	1
23	8487-54	1/2 X 3 NPL	1
24	8457-32	STRN RLF SR6N3-4 1200	1
25	8495-17	1/2 X 3/8 RED EL	1
26	8486-00	3/8 CLOSE	1
27	8452-31	7/8 WINDOW PLUG	1
28	8492-64	3/8 x 1/4 HEX BUSH	1
29	6228-50	SPUD GSKT	1
30	5406-15	17/64 (.266) SPUD	1
31a	8429-31	S87K DSI CNTRLR	1
31b	8429-03	S87D DSI CNTRLR	1
32	5320-60	T-T TERM STRIP	1
33	8406-58	SP RLY 24V - 3A	1
34	5305-10	RS-SER STD CONT BOX COV	1
35	5456-10	TRAN ASSM 120/1/60 24V-30VA RS-SER	1
36	5305-00	RS-SER STD CONT BOX	1
37	5404-50	CNTRL BOX BRKT	1
38	8484-99	SNAP BUSH SB-625-8 (2073) (P)	1
39	5410-00	RS40 WIRE COVER	1
40	5465-91	CARTRIDGE ASSEMBLY	1
41	5465-81	VENTURI ASSY	1
42	5362-00	MOTOR, MOUNT AND WHEEL ASSY	1
43	8408-39	SILICONE BOOT	1
44	5466-00	SPK WIRE-ASSM-RS-SER	1
45	5466-01	SENSE WIRE ASSM-RS40	1

Not	Part #	Description	Qty.
	5406-08	#23 (.154) SPUD	1
	5406-10	#14 (.182) SPUD	1
	5406-11	#12 (.189) SPUD	1
	5406-12	#4 (.209) SPUD	1
	5406-13	#1 (.228) SPUD	1

